

2020- 2029

WWF

2020 8



1

1

" "

2005

3 ,

2009 3

103171. 9      138595. 1      125968. 6  
22796. 8

1959 4      1957 6      9

1            15            12

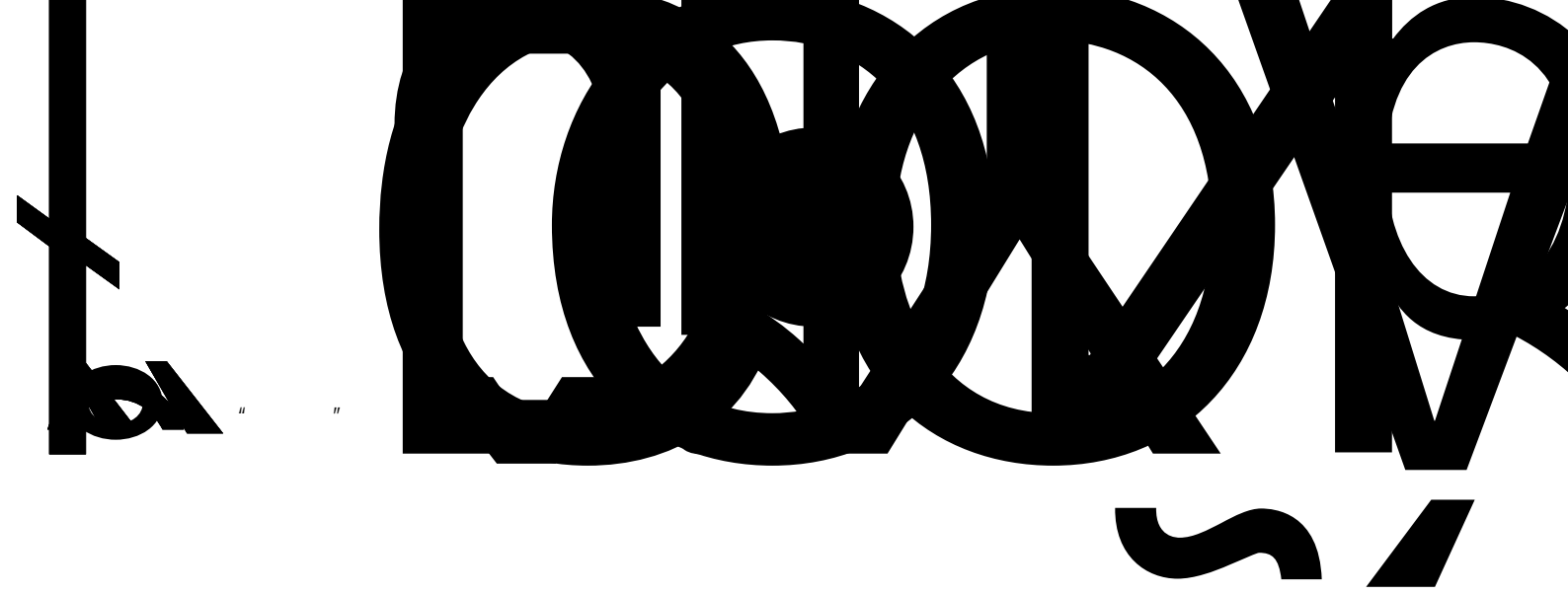
2

3

4

5

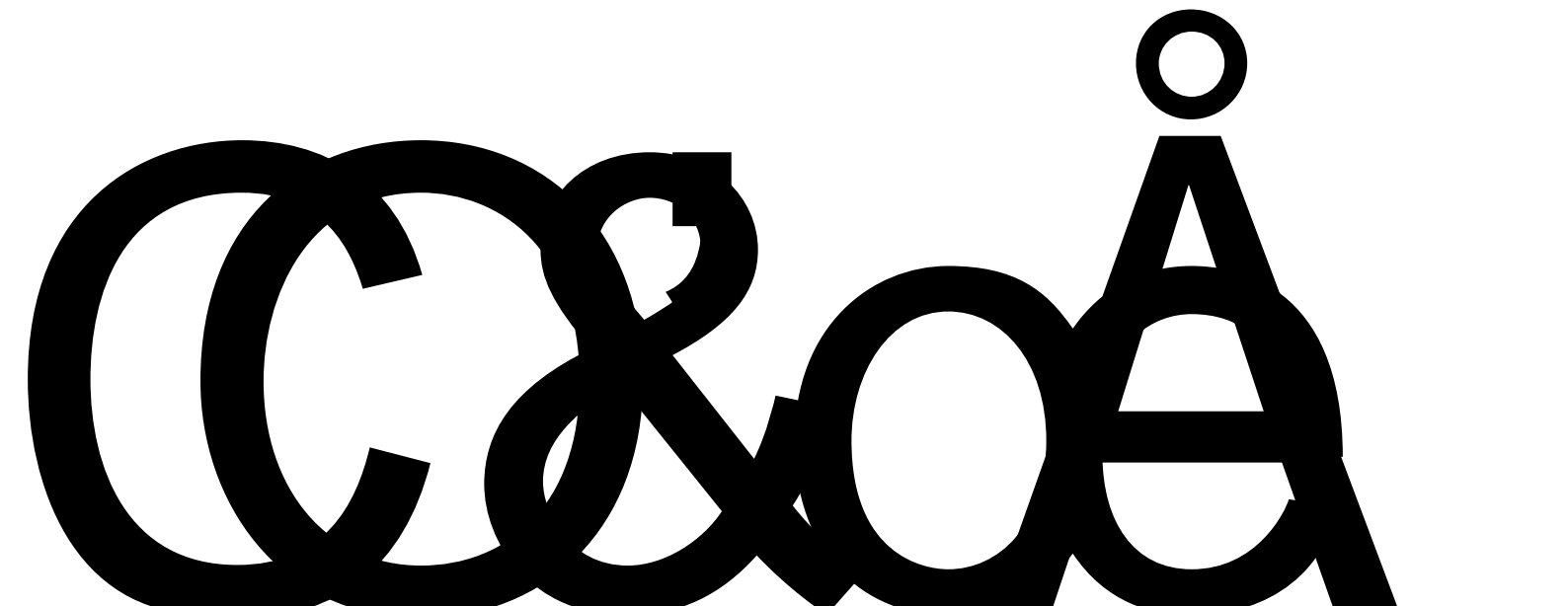
6



7

8

m



8

10 15

23.6



3

c

( " " ) 10

CITES

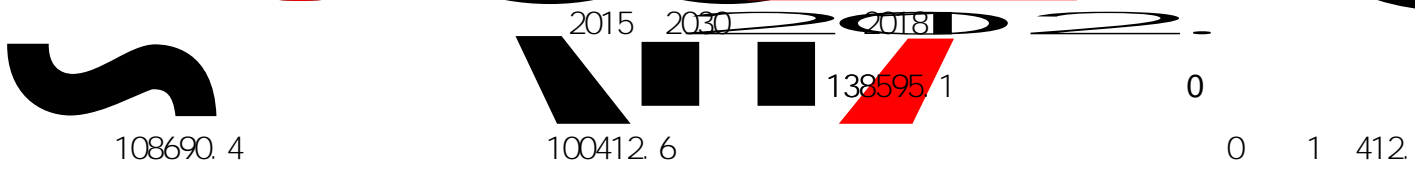
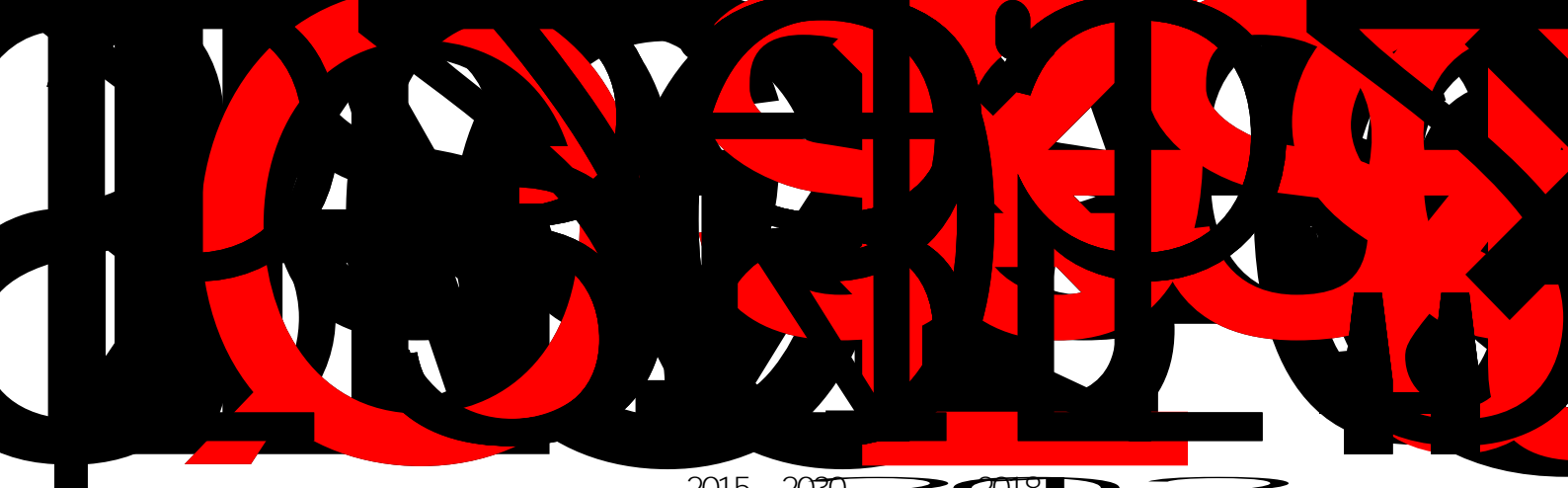
2019

23. 04

97777

j

è



	100412.6	92.4%
1130.7		1.0%
3881.7		3.4%
3265.4		3.0%
29904.7		
29815.7		99.7%
319.3		0.3%

	108690.4	
14609.8		13.4%
94080.6		86.6%

	133478.9	1284611.85
124868.0		1284611.85
3216.3		5394.6

	100412.6	80.4%
986842.26	76.8%	24455.5
19.6%	297769.59	23.2%
	1130.7	35.2%
2085.6	64.8%	
	3881.7	72.0%
	1512.8	28.0%
	133478.9	1284611.85

133478.9

1284611.85

19.7

o

3216.3

2.41%

4274.3

3.20%

25264.09

È

1.97%

19.7

0.01%

15

0.01%

k

@

9

1284611,

mí

/

26.0

3216.3

55.

e

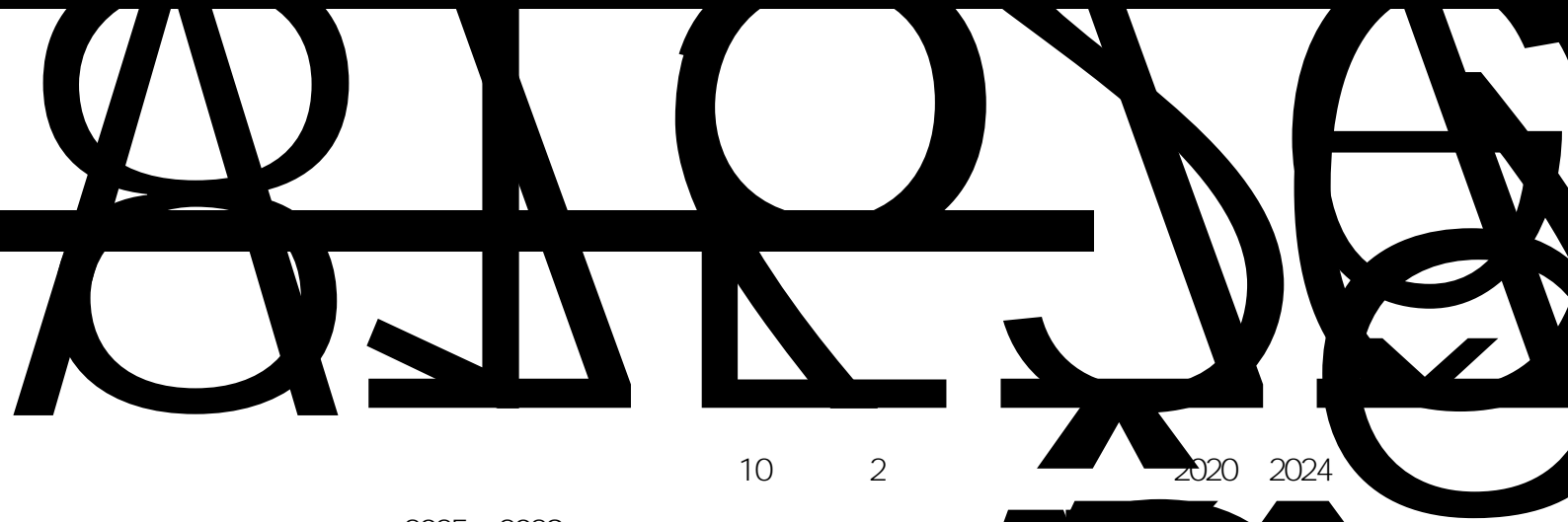
j e

		130262.6	
1284611.85		9.62	125968.6
	1259191.93		10.00
4274.3	25264.09		5.91
	19.7	155.83	7.93
		3.31%	42521
	3.12%	39320	
12.60%	3183		11.17%
17			

Ã

1

2



10 2

2020 2024

2025 2029

2018 3 19

2019 12

Å

2018 12 29

201

2014 7

20

2017 10

2016 2 6

( 2019 )

576

LY/T 2007-2012

LY/T 2008-2012

GB/T 15776-2016

GB/T 15781-2015



)

( ) (2014 1

(2009 3 )

( 2015-2030)

"

"

"

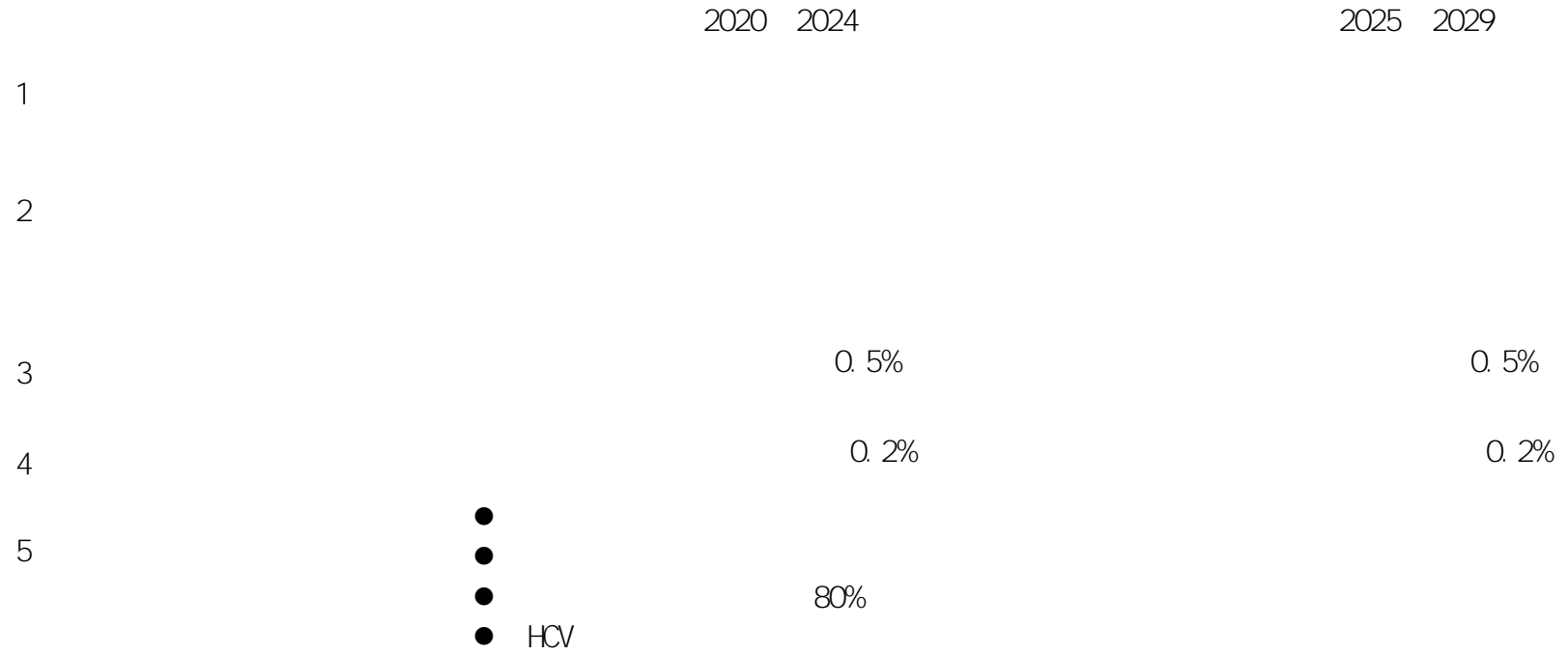
"

"

"

3.1

3.1



8	20	20
9	3000	3000



14609.8

,

,

123896.3

94080.6

29815.7

,

,

,

89.0



"

"

"

"

"

Š Š

"

"

FSC

FSC

PR107

7-33-97

7-20-59

"

"

" " "

30

1

10

1339

1233

24174

21900

2274

7

8

9

25513



283829



7

9

[ 2013] 114

,

,

" +"

125968. 6

103171. 9

22796. 8

" "

" "



17

10



30%

2

2

3

4

2

3

4

5

10

6

6.1

50

6.2

6.3

7

7.1

50

7.2

7.3

3

8

8.1

2

3

2

+2

3

2

8.2

8.3

"

"

"

"

—

—

9

10

6

12 14

3

11

12

13

14

14. 1

14. 2

14. 3

14. 4

22266

416326

291428

2227

41633

29143



**1**

1.1

1.2

1.3

**2**

2.1

2.2

2.3

2.4

2.5

**1**

1.1

1.2

1.3

**2**

2.1

2.2

2.3

**1**

1.1

1.2

1.3

1.4

**2**

2.1

2.2

2.3

2.4

2.5

2.6

**1**

1.1

1.2

1.3

1.4

1.5

1.6

**2**

2.1

2.2

2.3

2.4

2.5

**1**

1.1

1.2

**2**







60 70  
20 208  
4 205 4 303 6 307 2 406 4  
70  
2 312 1 510 1

265.4 112

113.4 58



14571

1000

5737

573.7

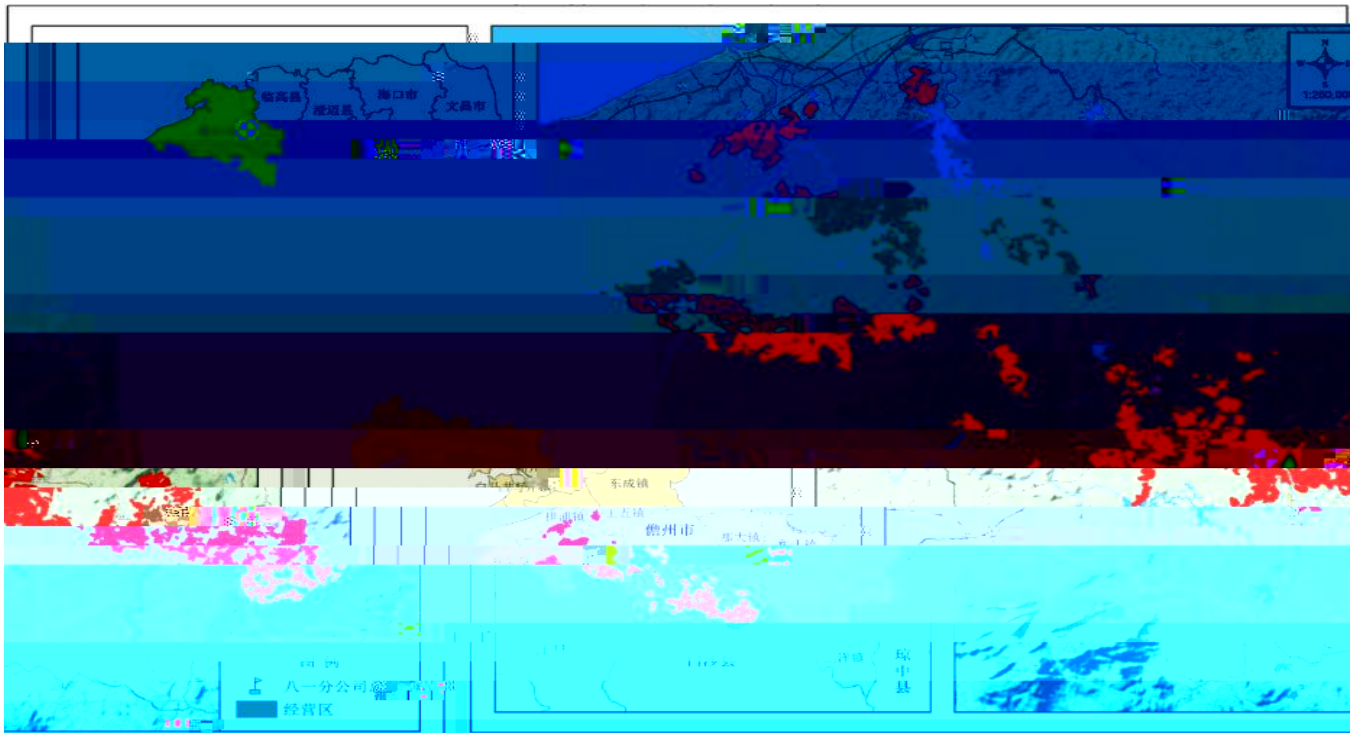


C

- 1.
- 2.
- 3.
- 4.
- 5.
- 6.
7. FSC®

FSC

FSC-C166366



FSC

